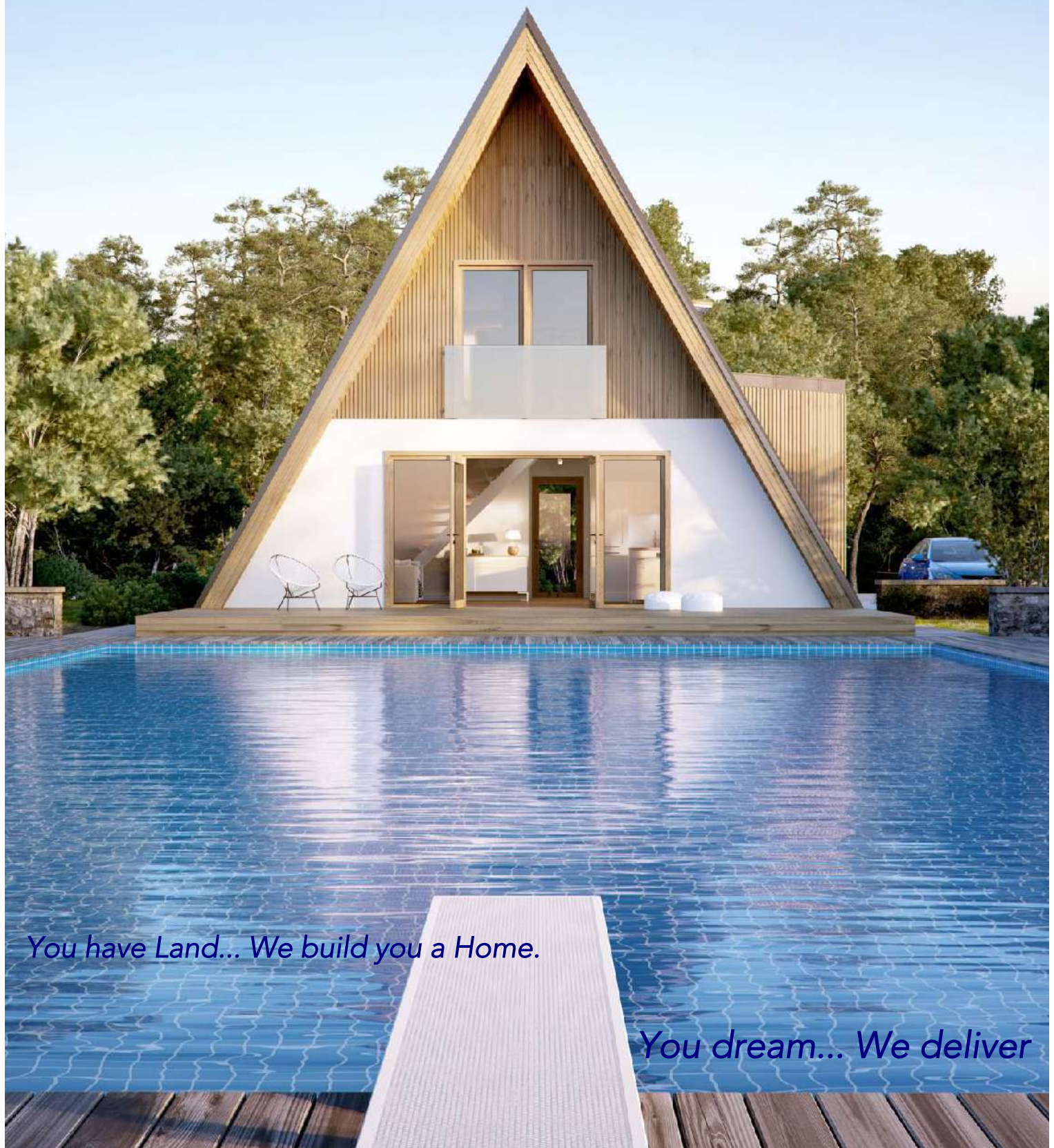


URTEC

integrating "AVRAME"
passive construction system.
Product Catalogue 2020



You have Land... We build you a Home.

You dream... We deliver

TABLE OF CONTENTS

SERIES

SOLO SERIES Floor Plans Dimensions

DOUBLE SERIES Floor Plans Dimensions

DUO SERIES Floor Plans Dimensions

TRIO SERIES Floor Plans Dimensions

THE STRUCTURAL KIT

LIST OF CONTENTS

GALLERY OF CONTENTS

ADD-ONS

GALLERY OF ADD-ONS

TECHNICAL

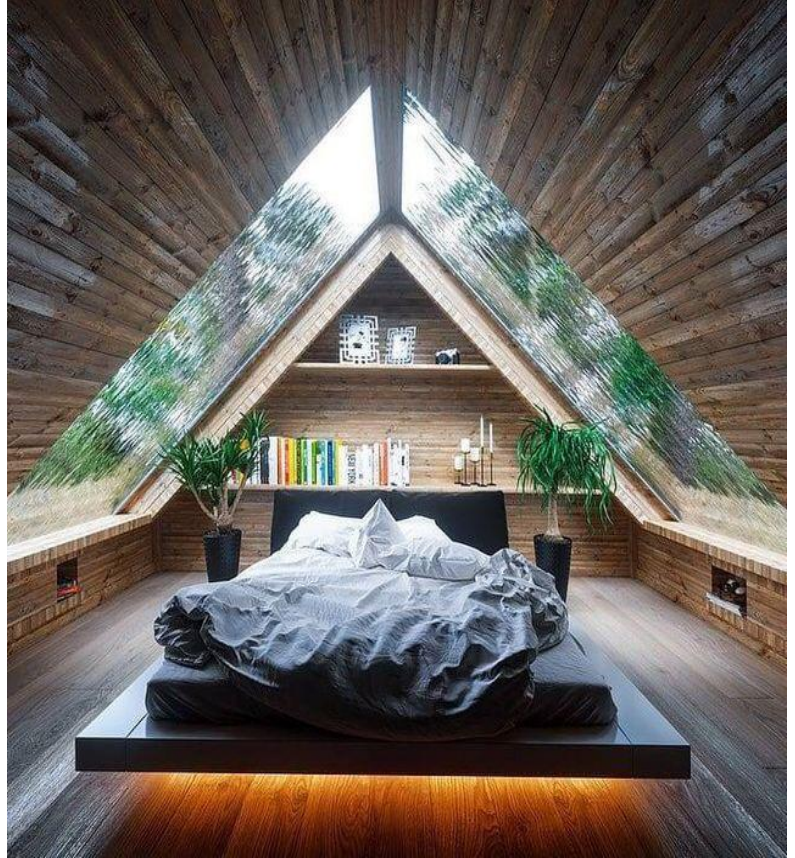
CROSS SECTIONS

BUDGET EXAMPLE

BUDGET EXAMPLE



Skylight Options

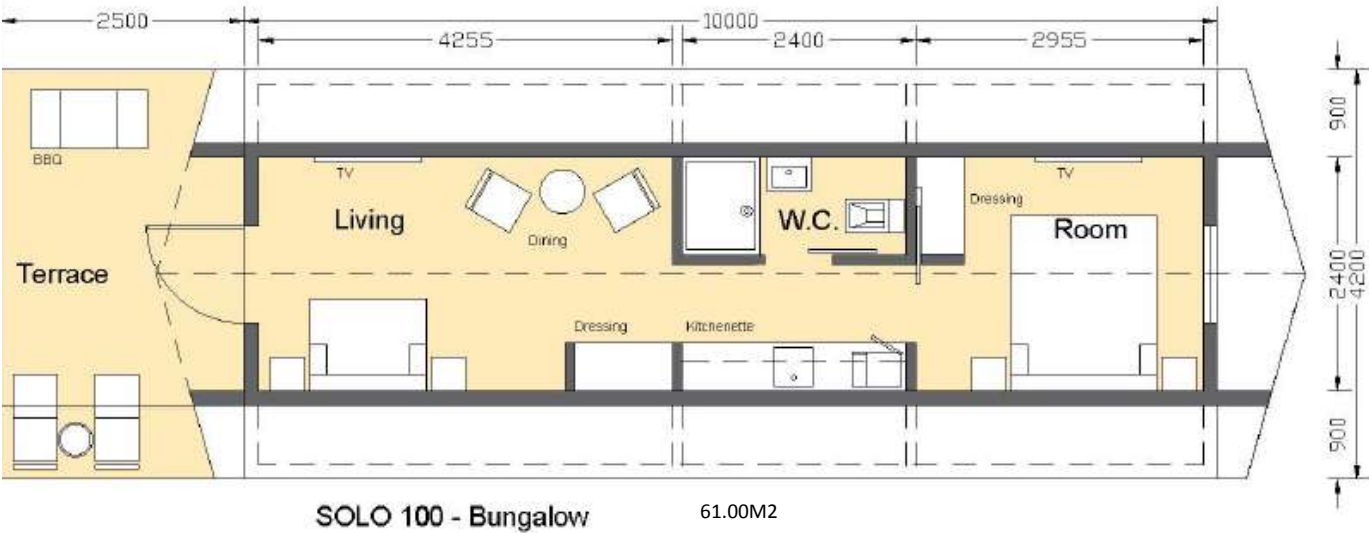
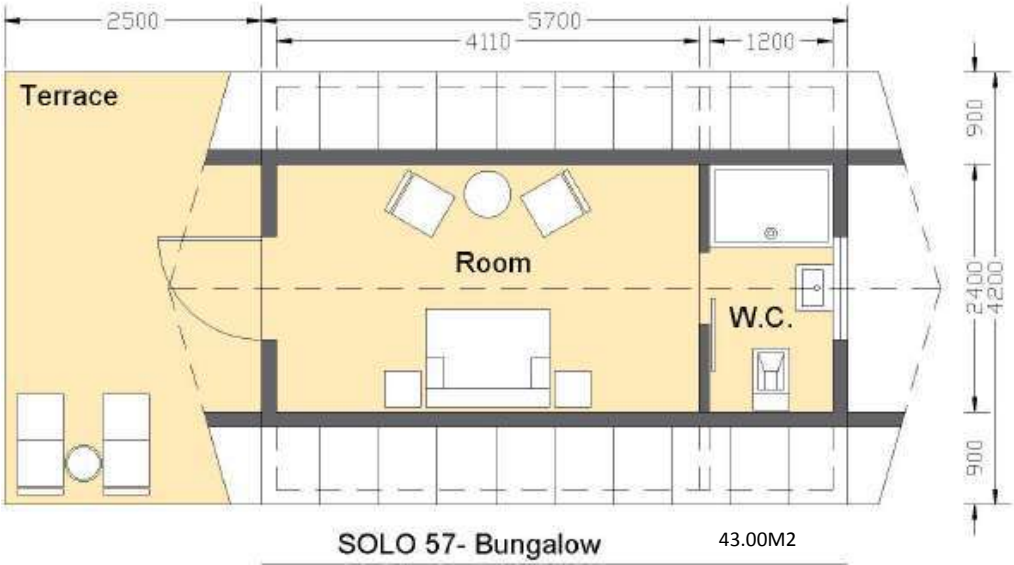


AVRAME MODELS





SOLO SERIES FLOOR PLANS



Euro at 1.15			
Type	Built Up sqm	Terrace sqm	Total sqm
SOLO 57	23.94	19.00	42.94
SOLO 75	31.50	19.00	50.50
SOLO 100	42.00	19.00	61.00





DOUBLE SERIES

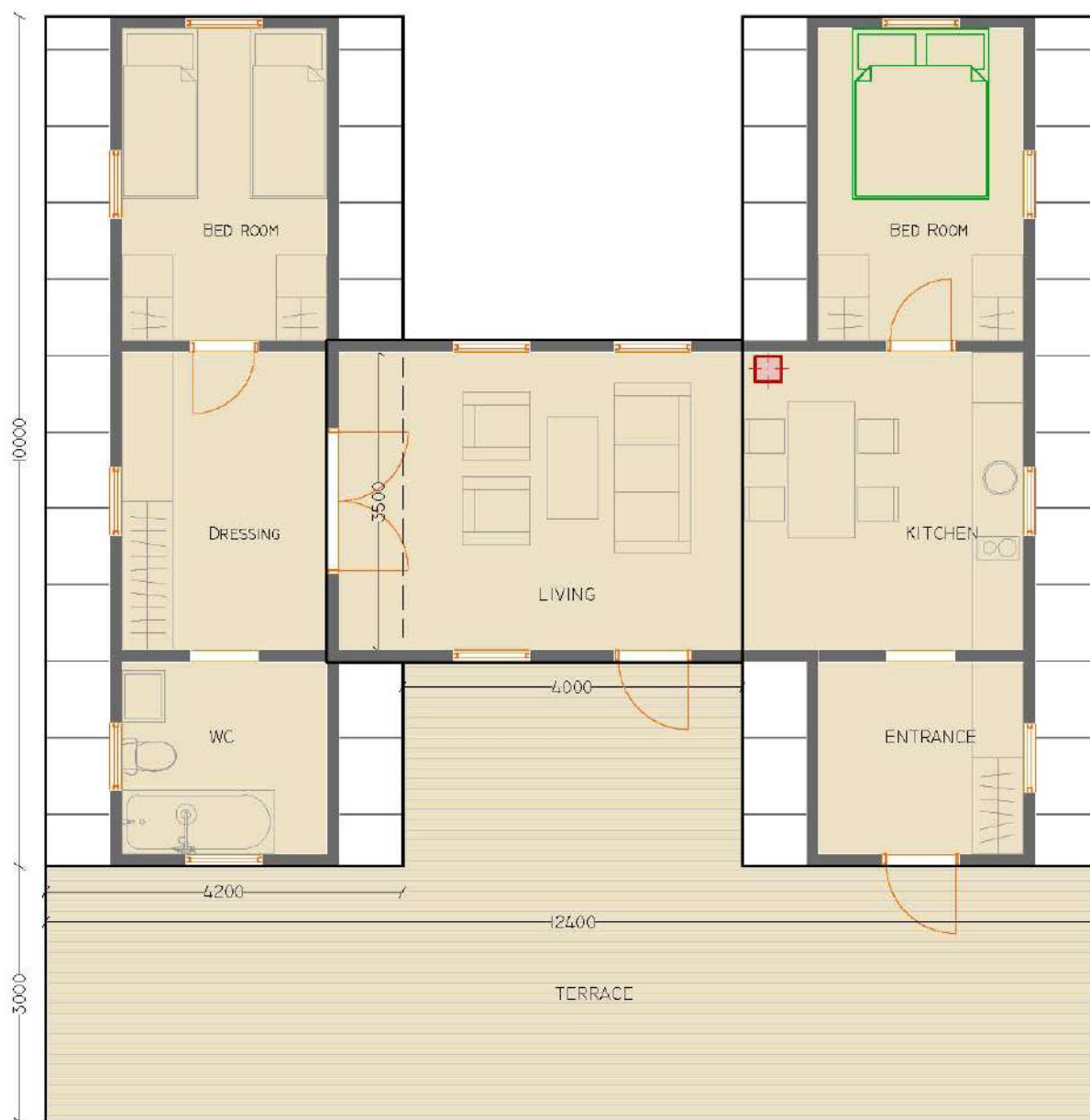


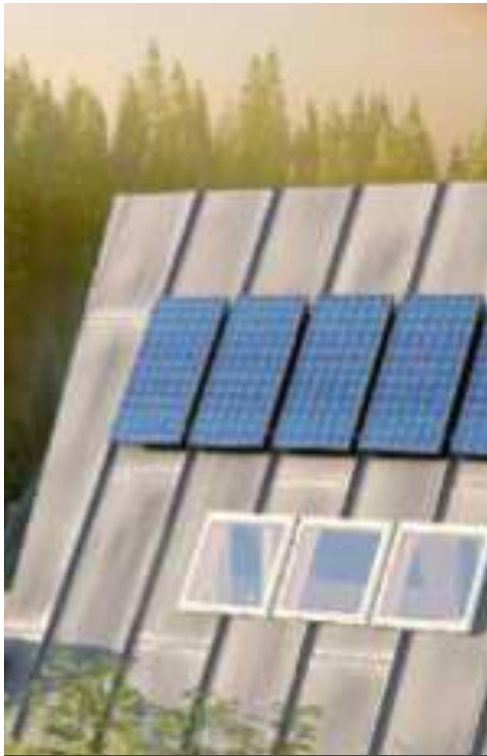
**DOUBLE SERIES EXIST FOR
TRIO'S DUO'S & SOLO'S**

SOLO DOUBLE SERIES FLOOR PLANS

SOLO100 DOUBLEv.1

99M² + 47M² TERRACE = 146M²





DUO SERIES





DUO SERIES FLOOR PLANS

DUO57 v.1 46.5M2 + 25.65M2 Terrace = 72.15M2 Net Total



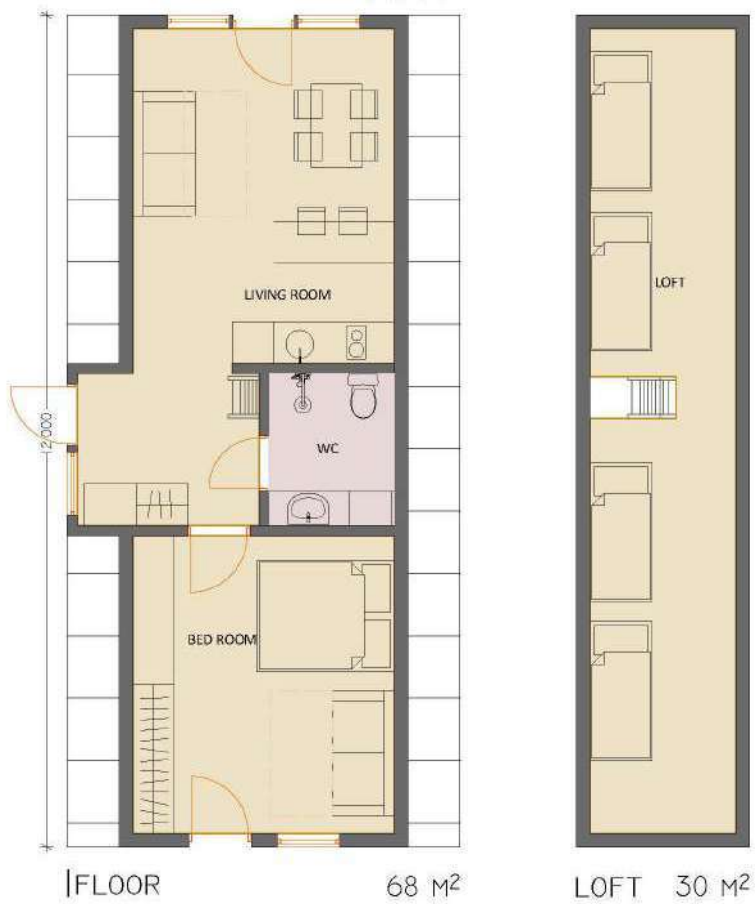
DUO75v.1 62.0M2 + 25.65M2 Terrace = 87.65M2 Net Total



DUO100v.1 $82.0\text{M}^2 + 34.2\text{M}^2 \text{ Terrace} = 116.0\text{M}^2 \text{ Net Total}$



DUO120v.1 $98.0\text{M}^2 + 34.2\text{M}^2 \text{ Terrace} = 132.0\text{M}^2 \text{ Net Total}$



Euro at 1.15			
Type	Built Up sqm	Terrace sqm	Total sqm
DUO 57	46.50	25.65	72.15
DUO 75	62.00	25.65	87.65
DUO 100	82.00	34.20	116.20
DUO 120	98.00	34.20	132.20







TRIO SERIES FLOOR PLANS

TRIO57 v.1 80.0M2 + 40.5M2 Terrace = 120.5M2 Net Total

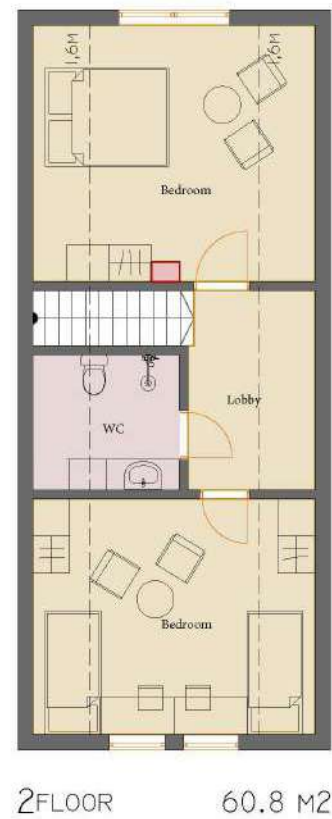


TRIO75 v.1 105.5M2 + 40.5M2 Terrace = 146M2 Net Total

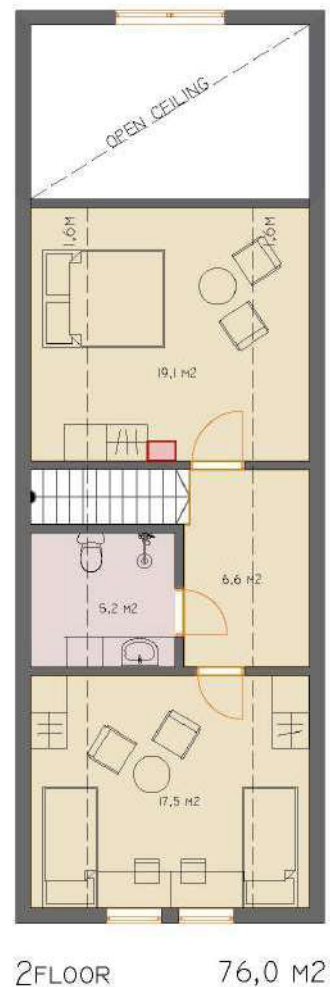




TRIO120 v.1 169.0M2 + 54.0M2 Terrace = 223.0M2 Net Total



TRIO150 v.1 211M2 + 54.0M2 Terrace = 265.0M2 Net Total



Euro at 1.15			
Type	Built Up sqm	Terrace sqm	Total sqm
TRIO 57	80.00	40.50	120.50
TRIO 75	105.50	40.50	146.00
TRIO 100	141.00	54.00	195.00
TRIO 120	169.00	54.00	223.00
TRIO 150	211.00	54.00	265.00



THE STRUCTURAL KIT



The Avrame Structural Kit

The structural kit includes the following:

- Strength graded timber as structural truss
- Strength graded timber for gable walls
- Battens for roof structure (30x45mm)
- Battens for wall structure (45x45mm)
- Pressure treated sill plate
- OSB3 for floor structure (12mm & 28mm)
- Breathable underlay for roofing (DIVOROLL Universal 2S)
- Vapour barrier
- PVC windows and terrace doors (U=1,2 or better with 3-layer glass)
- External doors and MDF internal doors
- Building accessories such as fixings, nails, WT-screws, silicone, foam etc.
- Full set of drawings for getting building permit
- Production
- Assembly

Strength graded timber
as structural truss



Pressure treated sill plate

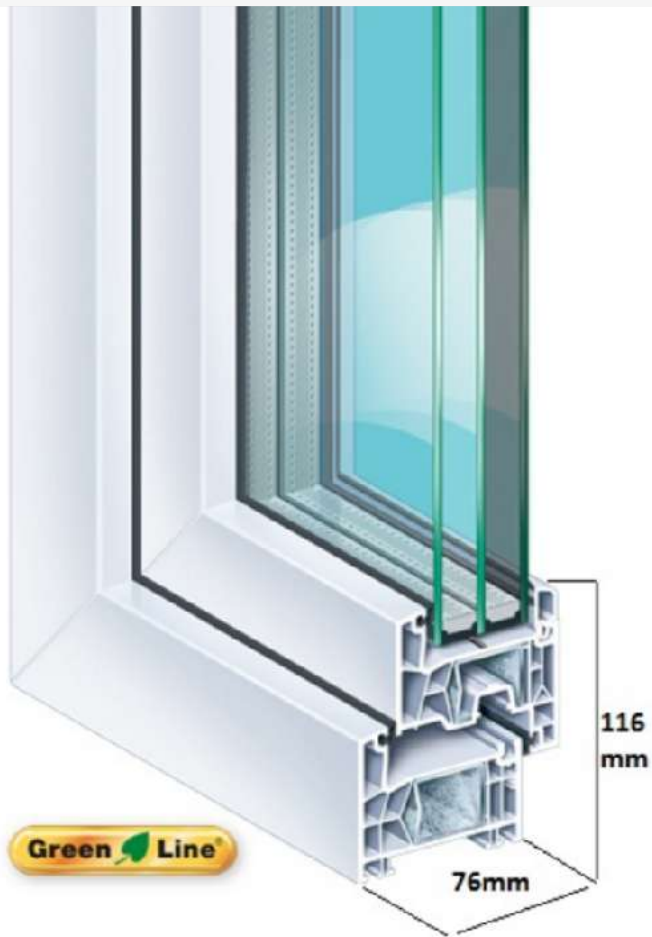




OSB3 for floor structure
(12mm & 28mm)



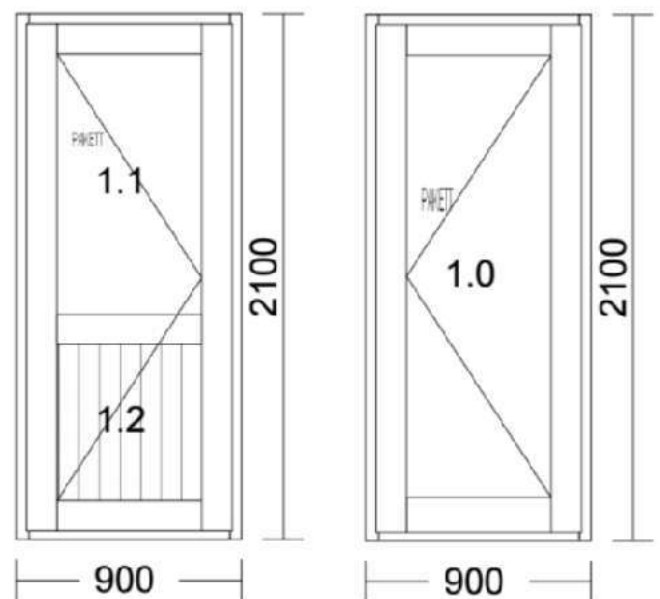
Breathable underlay for roofing (DIVOROLL Universal 2S)



PVC windows and terrace doors
($U=1,2$ or better with 3-layer glass)

- Lead-free "Green Line" profile
- 6 chambers
- Insulated units with 2 or 3 glasses
- Windows $U \geq 0.9W/m^2K$
- Noise resistance 48 dB
- Waterproof 9A
- Carefree
- Energy class A

External doors



MDF internal doors



TR 90 x 90 x 65



TR 5 x 40



TR 5 x 90



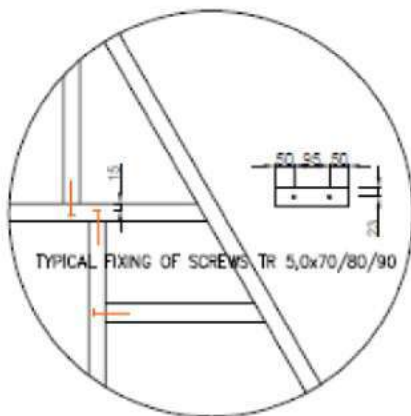
TR 6.5 x 190



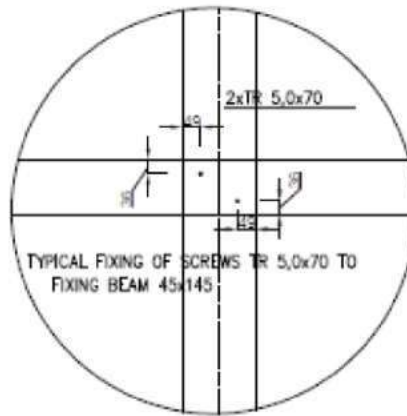
TR 5 x 70

Building accessories such as fixings, nails, WT-screws, silicone, foam etc.

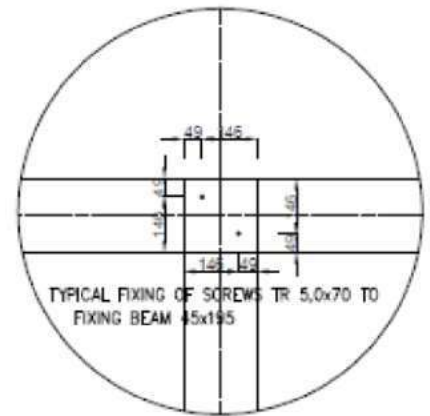
TYPICAL JOINT TS-1



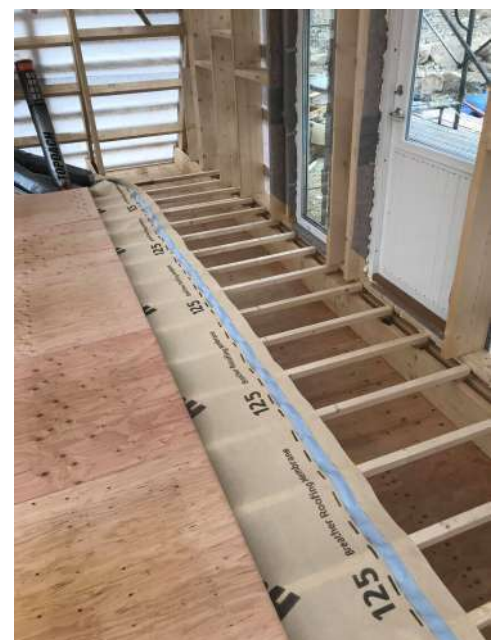
TYPICAL JOINT TS-2



TYPICAL JOINT TS-3



Full set of drawings for getting building permit



ADD-ONS



Dormer

2.4m x 2.3m. Includes:

- Studwork
- 1 PVC fixed window
- 1 PVC balcony door
- Painted exterior cladding

Terrace

4.2m, 5.7m, 9m wide, deep impregnated. Includes:

- 28mm x 120mm boards
- 45mm x 145mm boards

Choice of size x 2.5m terrace
Choice of size x 4.5m terrace
Choice of size x 6m terrace





Velux 1

MK06, 78mm x 118mm.

EDW kit



Stairs

Stair TRIO



Stair DUO

Facade cladding Raitwood
18mm x 121mm

[Paint Card Link](#)





Ruukki Classic C roof
covering



RR41 DARK SILVER MATT



RR750 TILE RED



RR32 DARK BROWN



RR29 RED



RR2H3 ANTHRACITE



RR887 CHOCOLATE
BROWN



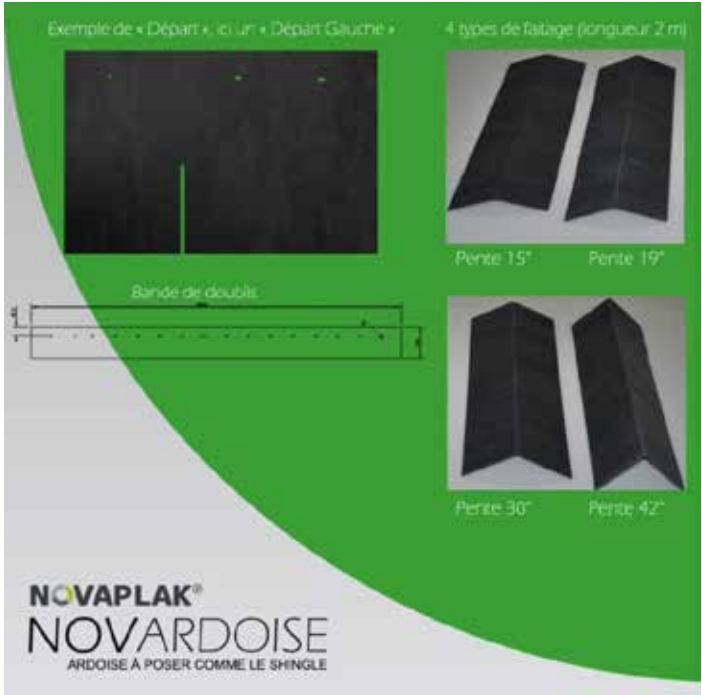
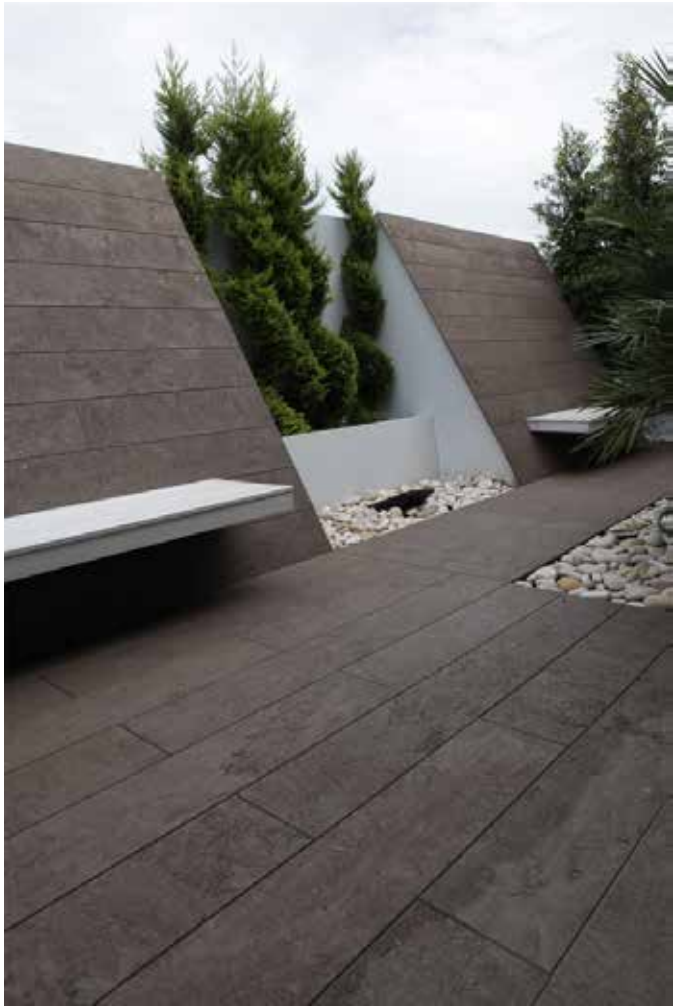
RR33 BLACK



RR22 GREY



RR23 DARK GREY



SECTIONS

SECTIONS



BUDGET EXAMPLE

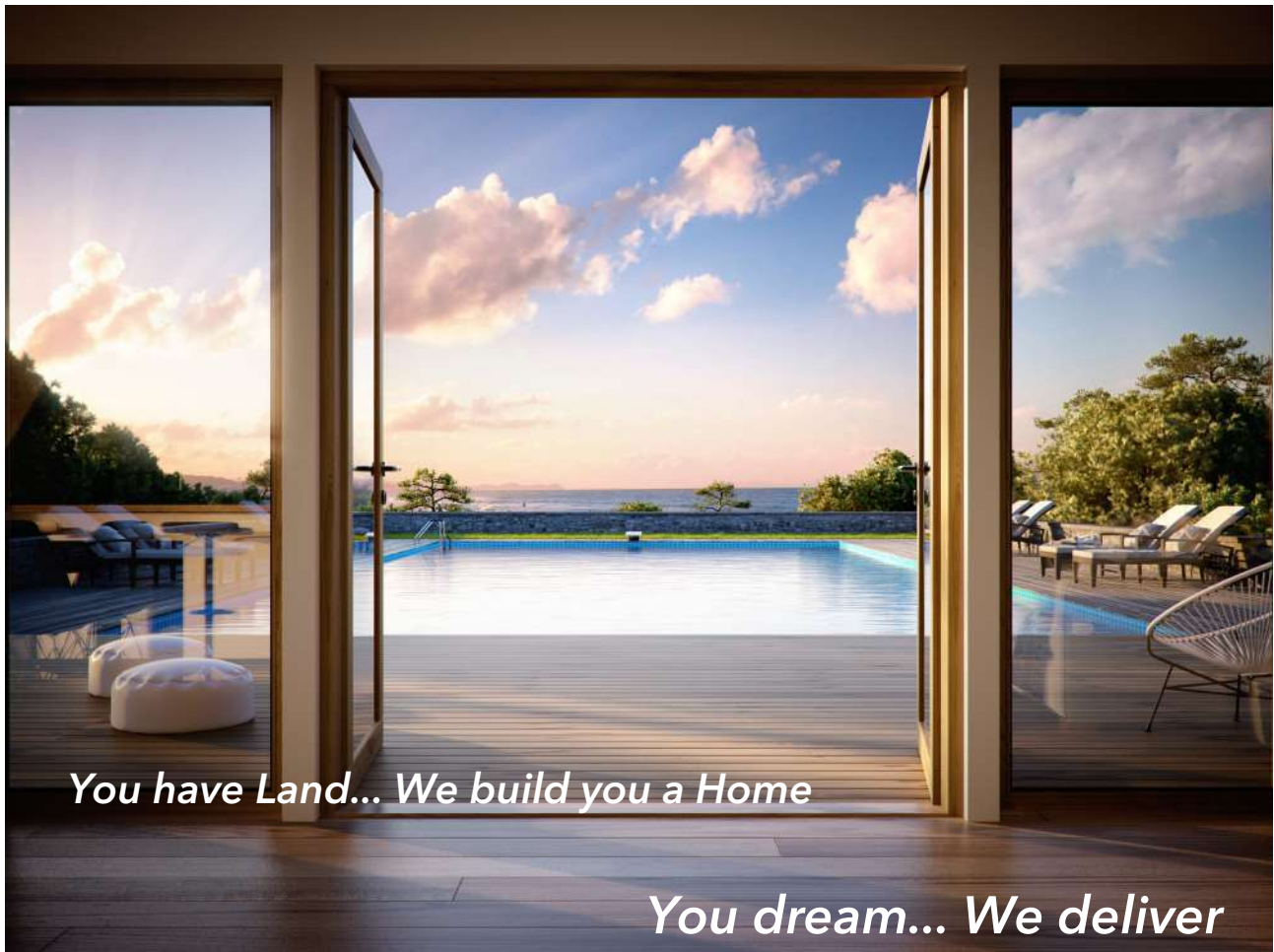
ITEM	SUPPLIER	SUM
<i>Pre-construction services</i>		
Applying for building permit	Customer / Optional URTEC	
Preparing/clearing the construction site	Customer / Optional URTEC	
Ordering the kit and additional services	Optional URTEC	
Shipping the kit to construction site	Customer / Optional URTEC	
Unloading the kit from container/truck	Customer / Optional URTEC	
<i>Structure</i>		
Loadbearing timber framework for roof	AVRAME - structural kit	
Gable wall structure	AVRAME - structural kit	
Floor framing	AVRAME - structural kit	
Windproofing fabric	AVRAME - structural kit	
Vertical lathes on top of rafters	AVRAME - structural kit	
Pressure treated sill plates	AVRAME - structural kit	
OSB3 plates 12mm for rigidity of building	AVRAME - structural kit	
OSB3 plates 12mm for underflooring	AVRAME - structural kit	
OSB3 plates 22mm for floor	AVRAME - structural kit	
45x45mm battens for additional insulation cavity	AVRAME - structural kit	
Vapour barrier	AVRAME - structural kit	
Fixings (screws, nails, tapes, etc) for structure	AVRAME - structural kit	
<i>Roof</i>		
Horizontal roofing battens	AVRAME - Full kit	
Roof covering RUUKKI Classic C	AVRAME - Full kit	
<i>Openings</i>		
PVC windows with 3-layer glass	AVRAME - structural kit	
PVC balcony door(s) with 3-layer glass	AVRAME - structural kit	
Wooden exterior door (full glass or half glass	AVRAME - structural kit	
MDF interior door(s)	AVRAME - structural kit	
Window shutters	Local supply / Optional Urtec	
<i>Exterior finish</i>		
Exterior cladding	AVRAME - Full kit	
Gable boards	AVRAME - Full kit	
Soffit boards	AVRAME - Full kit	
Architrave boards around doors and windows	AVRAME - Full kit	
<i>Other</i>		
Set of assembly drawings	AVRAME - structural kit	
Paints/stains/preservatives for exterior	Local supply / Optional Urtec	
Insulation materials (rockwool, glasswool or similar)	Local supply / Optional Urtec	
Chimney	Local supply / Optional Urtec	
Fireplace	Local supply / Optional Urtec	
Scaffolding	Local supply / Optional Urtec	
<i>Optional building parts</i>		
Dormer(s)	AVRAME - Full kit	
Velux roof windows	AVRAME - Full kit	
Terraces	AVRAME - Full kit	

<i>Foundation</i>		
Excavating soil	Local supply / Optional Urtec	
Building formworks	Local supply / Optional Urtec	
Pooring concrete	Local supply / Optional Urtec	
<i>Interior finish</i>		
Staircase	AVRAME - Full kit	
Interior paneling (coated)	AVRAME - Full kit	
Interior wall framework	AVRAME - Full kit	
Listings (floor and ceiling)	Local supply / Optional Urtec	
Floor covering (parquet, carpets etc)	Local supply / Optional Urtec	
Kitchen cabinets	Local supply / Optional Urtec	
<i>Services</i>		
Electric wiring	Local supply / Optional Urtec	
Water/sewerage piping	Local supply / Optional Urtec	
Faucets, toilets, showers	Local supply / Optional Urtec	
Asembly of materials	Local supply / Optional Urtec	
Ventilation	Local supply / Optional Urtec	
Heating/cooling systems	Local supply / Optional Urtec	
Off-grid solar systems	AVRAME - optional	
<i>Summary</i>		
Sum of everything		
Taxes		
GRAND TOTAL		



URTEC

Urban Technologies for Design & Construction
LEBANON & CYPRUS



CONTACT

Please direct questions about our pricing
or services to our contact details below:

CEO | Patrick Mallat

Chief Executive Officer

Phone: +9613689560

E-mail: patrick.mallat@urtec.com

COD | Omar Harb

Chief Operations & Design

Phone: +9613960556

E-mail: omar.harb@urtec.com

