

URTEC

Lightweight Concrete Prefab Houses

Patrick.mallat@urtec.com

Tel: +961 3 689 560

URTEC is proud to present "**The Ego Trip**".

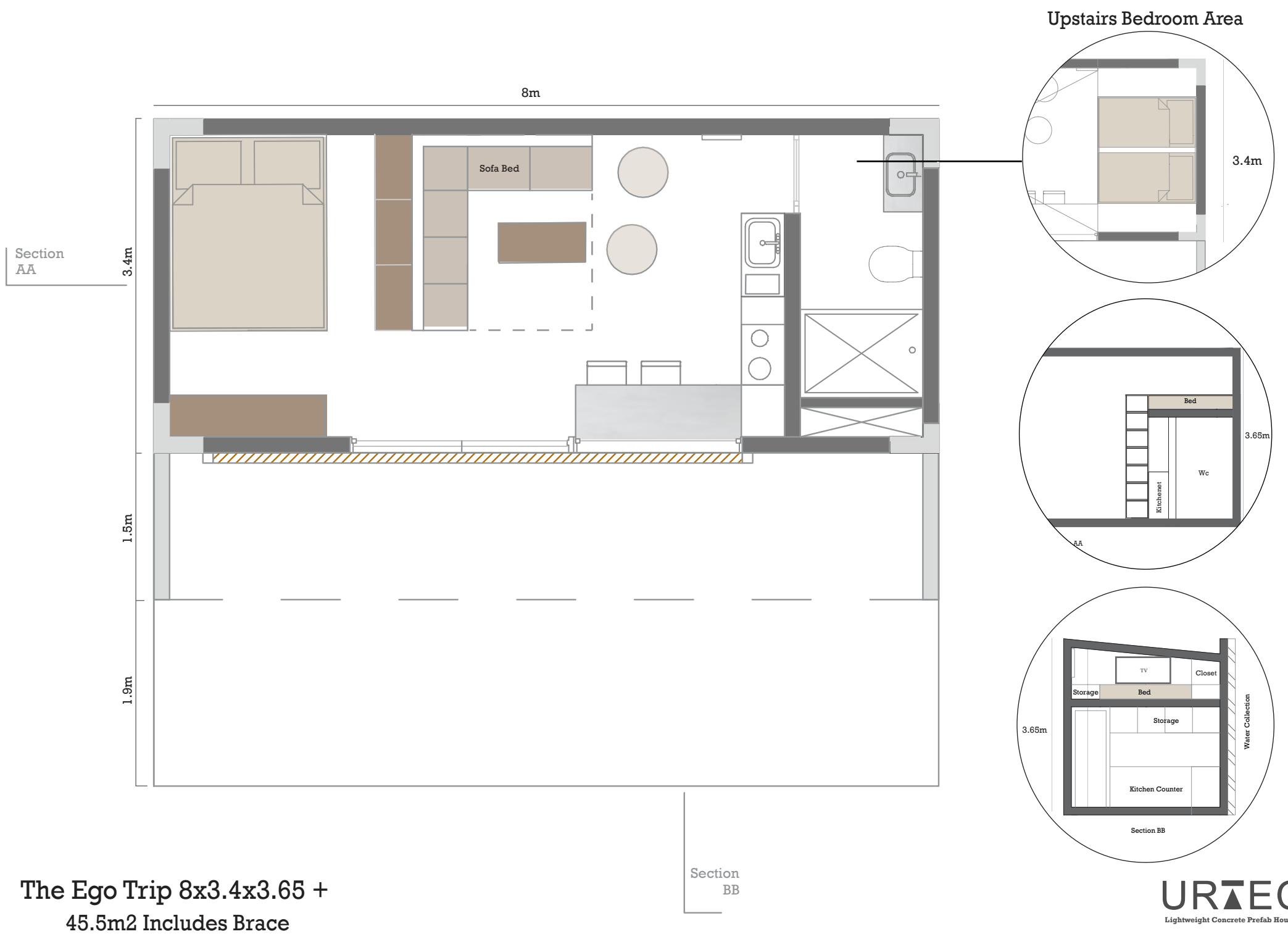
A Passive, extendable, modern, modular, state of the art house in concrete and light weight concrete.

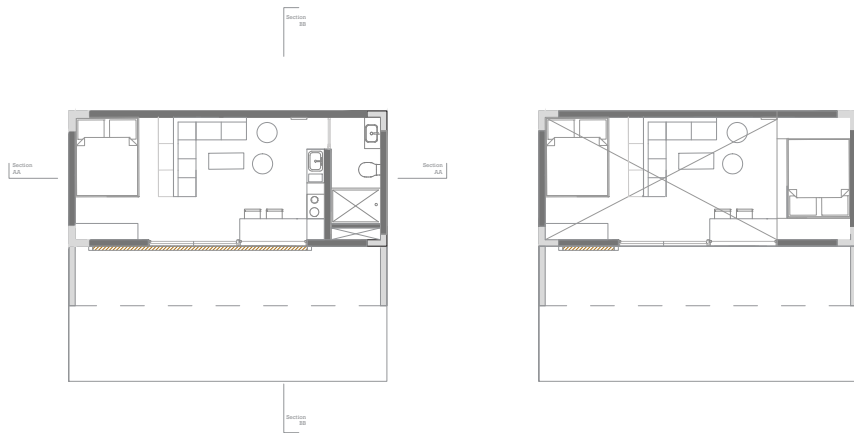
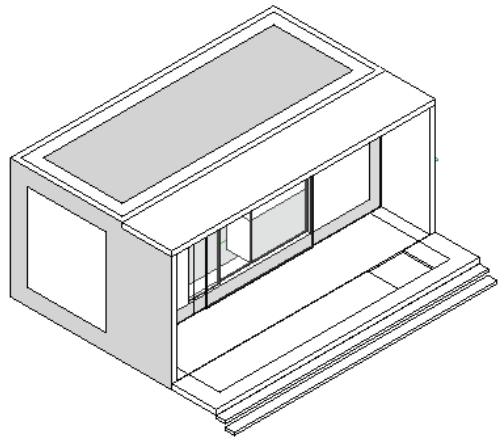
This house is equiped with the latest technology for renewable energy, saving you money on electrical, heating and cooling bills. Your home will keep expanding by adding modules to accomodate your growing family during your entire life and beyond.

You have land? We build you a Home
You Dream, we Deliver!



URTEC
Lightweight Concrete Prefab Houses





The Ego Trip 8x3.4x3.65 +

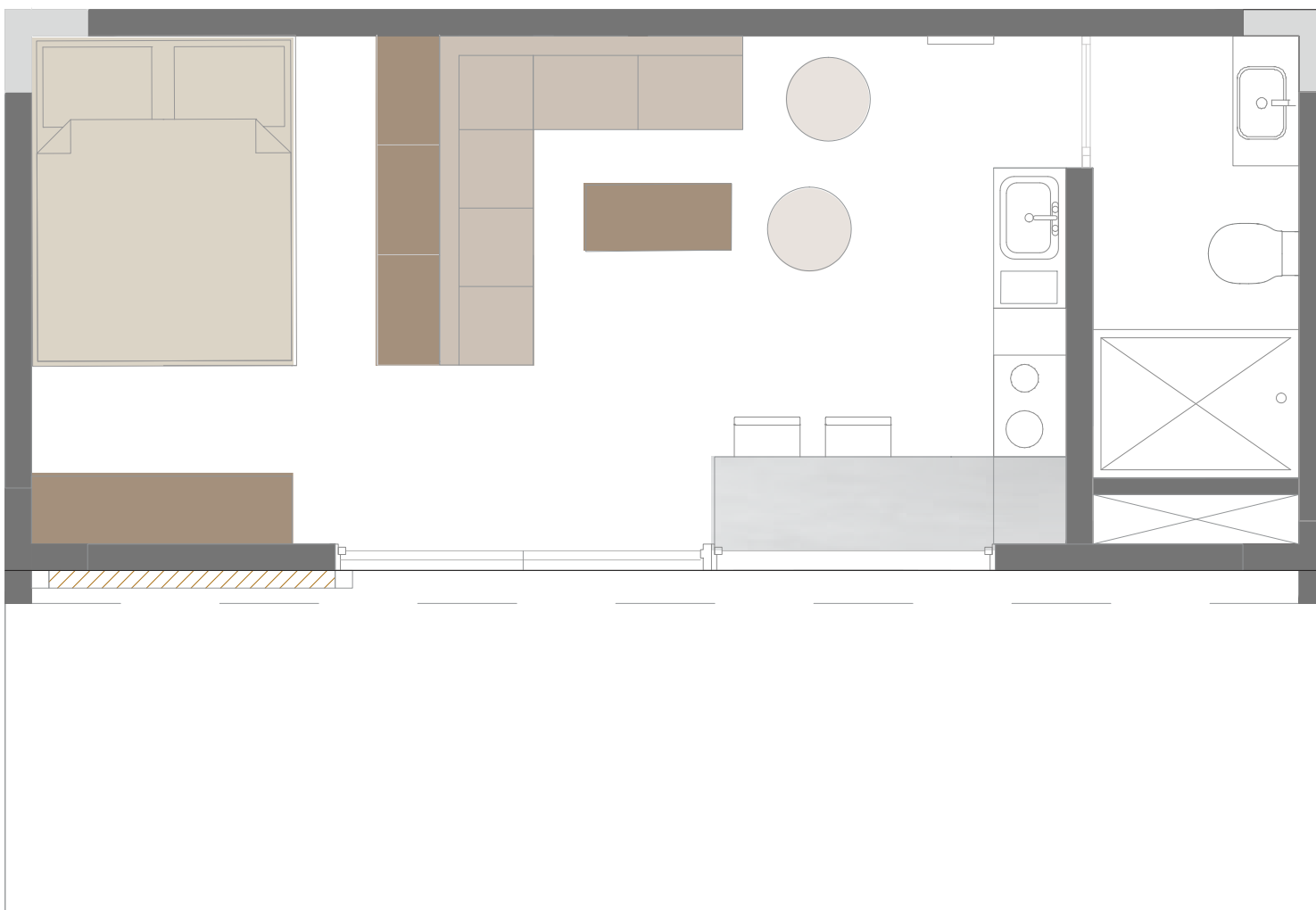






URTEC
Lightweight Concrete Prefab Houses

Section
AA

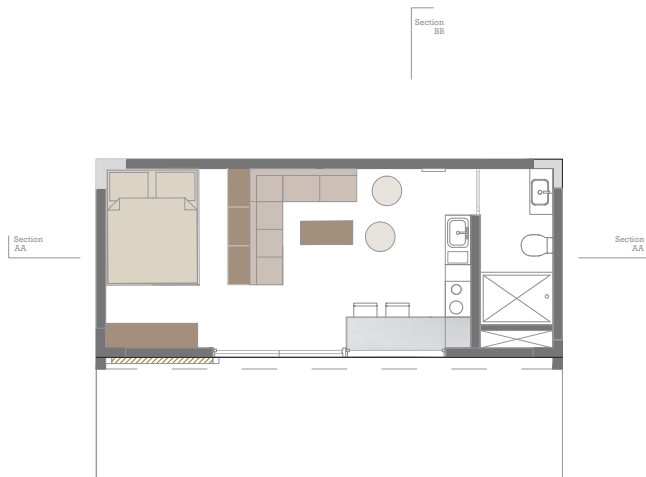
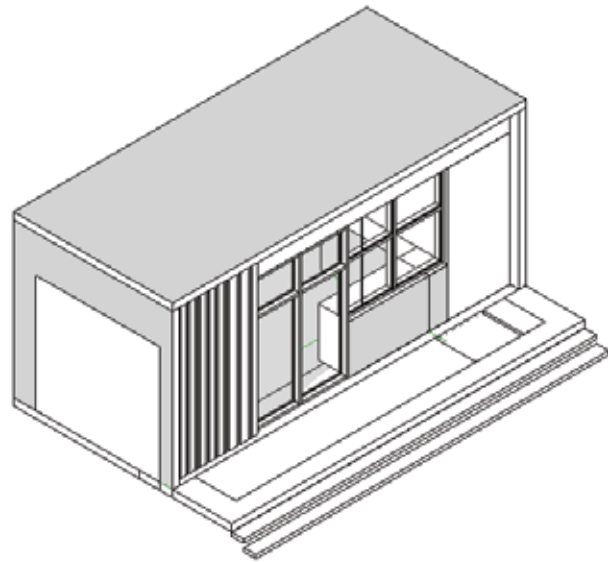


Section
AA

The Ego Trip 8x3.6x3.65 +

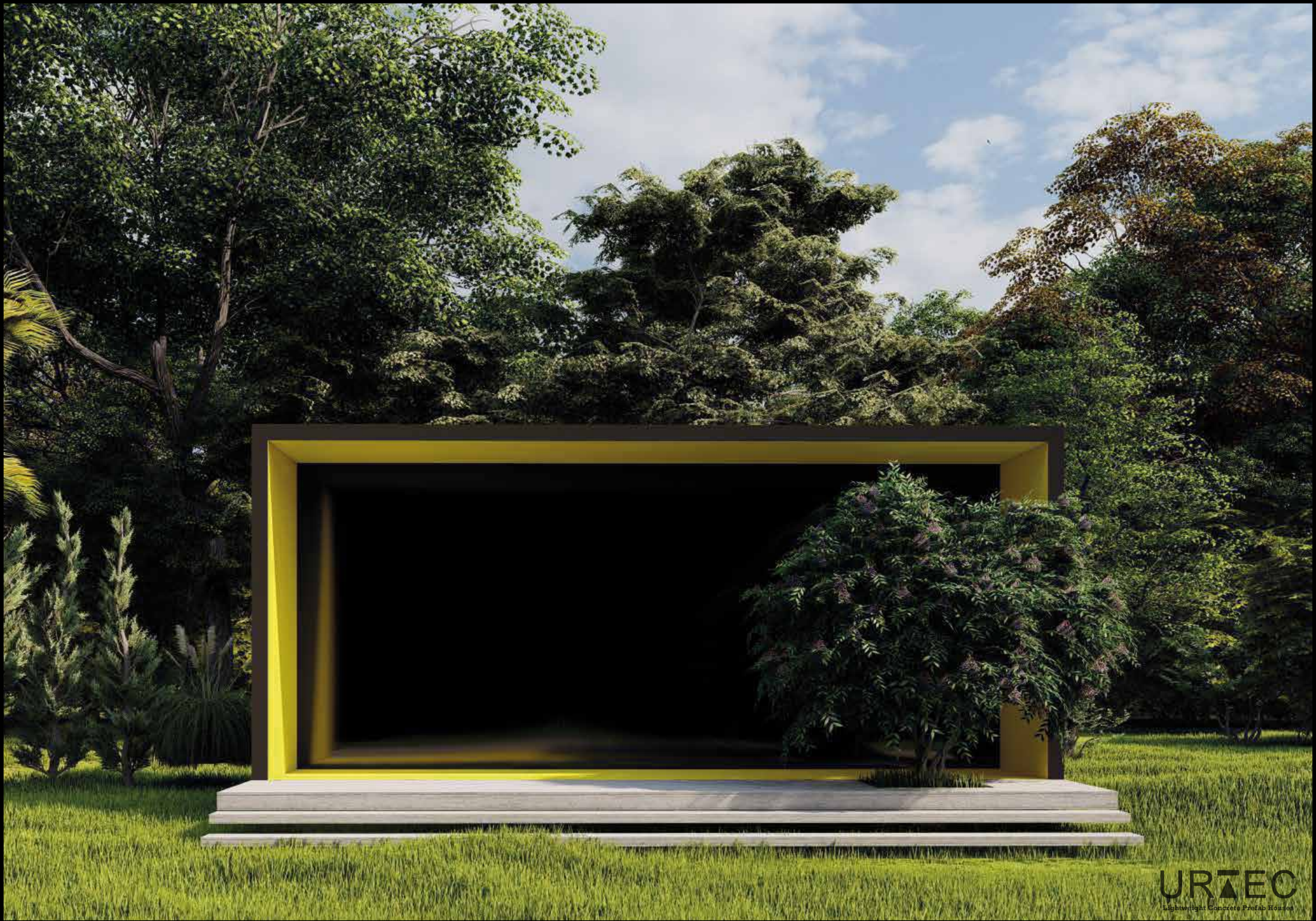
44m2 Includes Deck

URTEC
Lightweight Concrete Prefab Houses



The Ego Trip 8x3.6x3.65 +

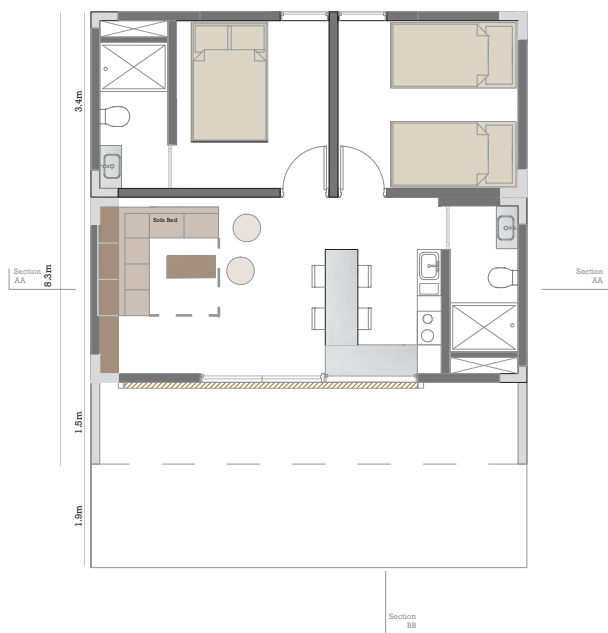
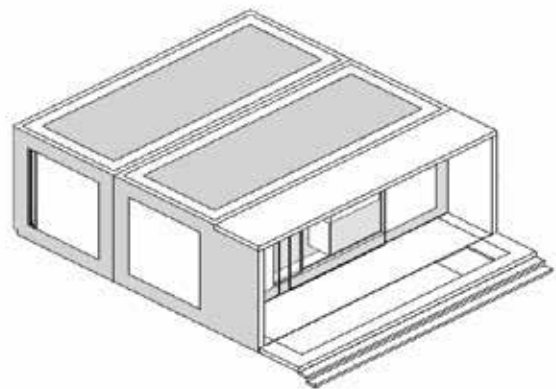








The Ego Trip Double 8x3.4x3.65 +
91m2 Includes Brace

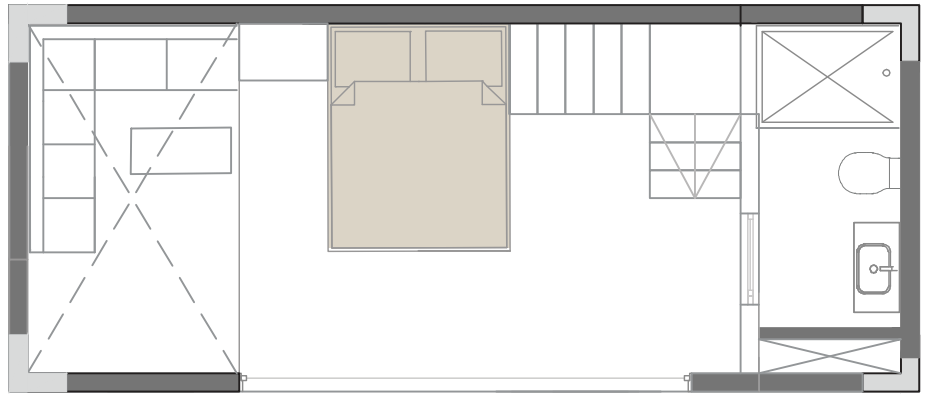
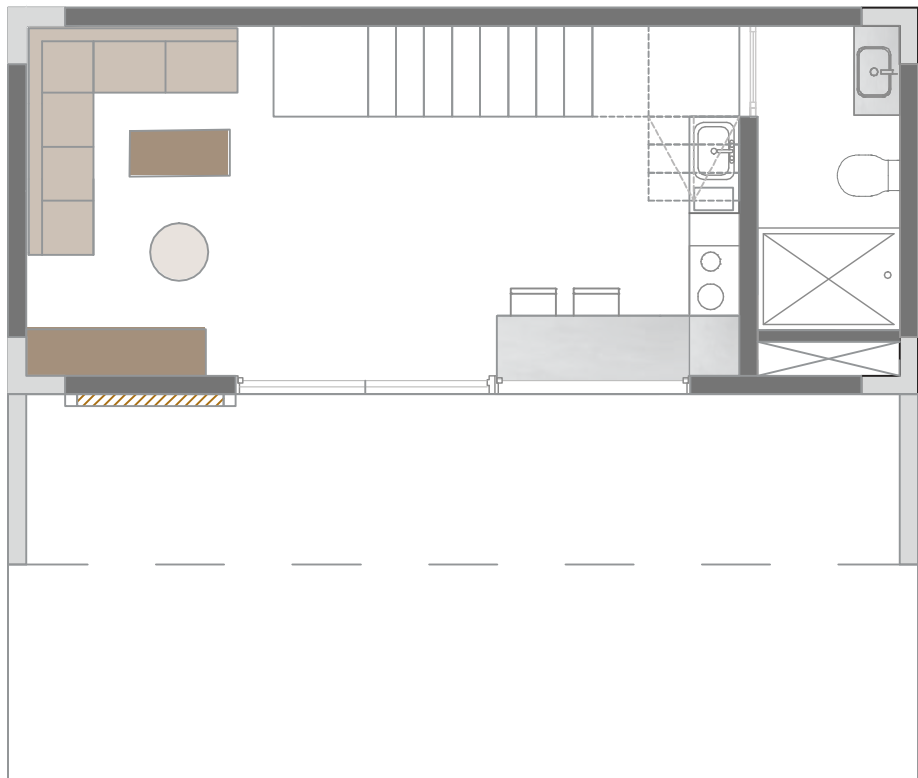




URTEC
Lightweight Concrete Prefab Houses

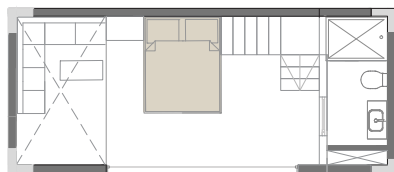
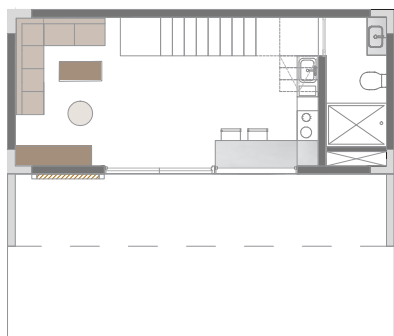
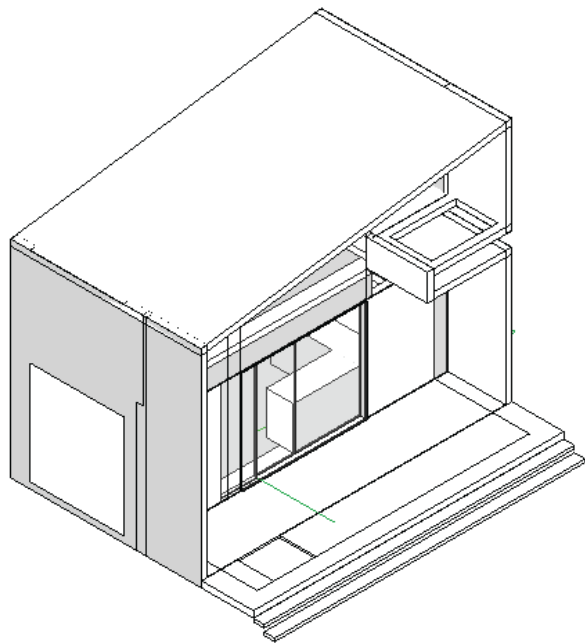


URTEC
Lightweight Concrete Prefab Houses



8x3.4 module with slanted roof

81.6m² Includes Brace & Deck

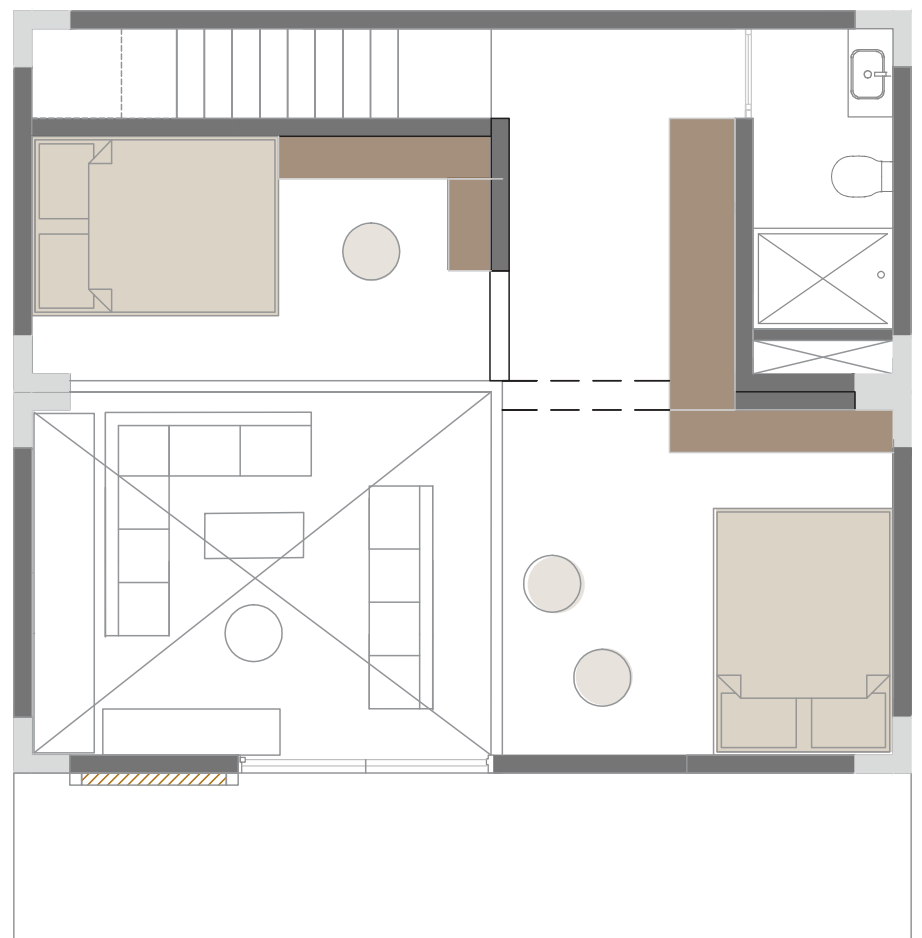
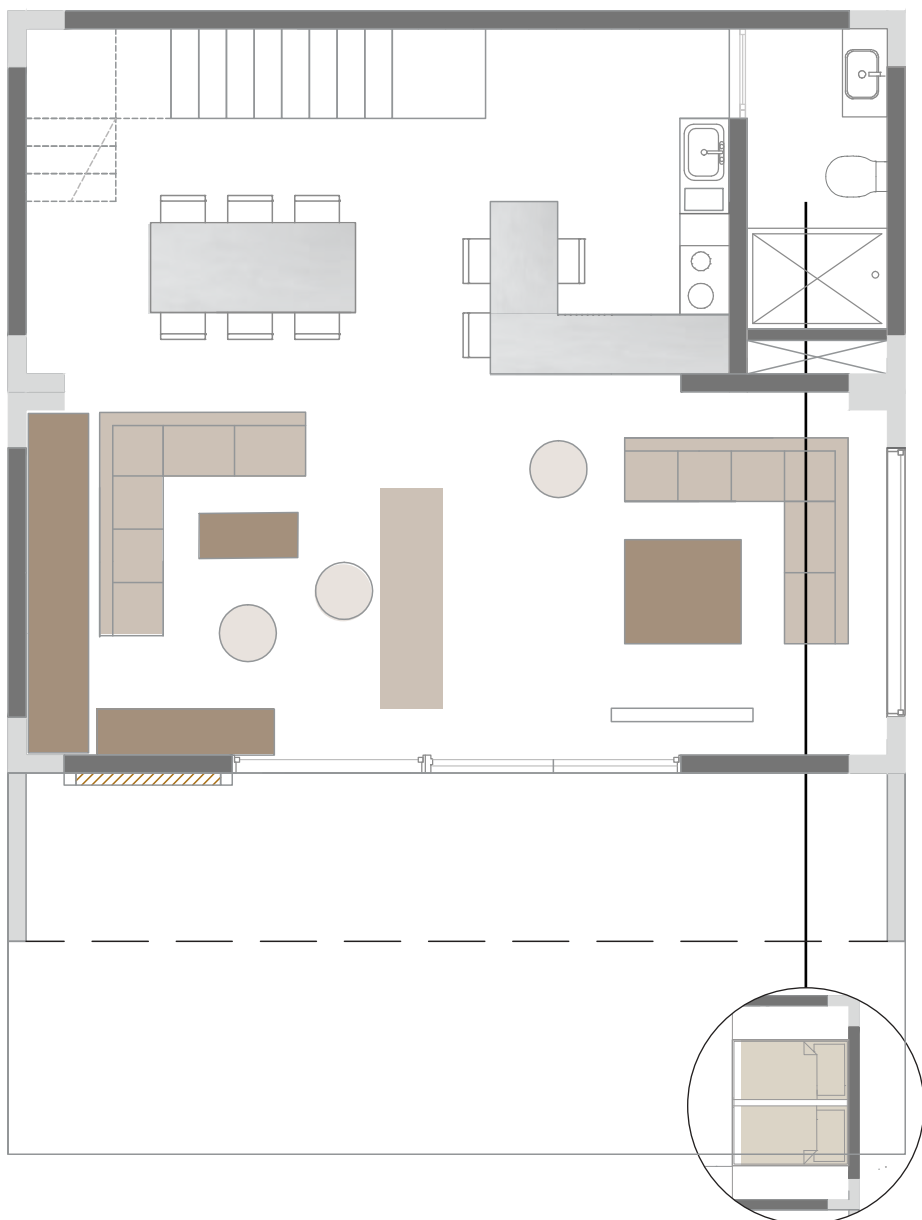


8x3.4 module with slanted roof





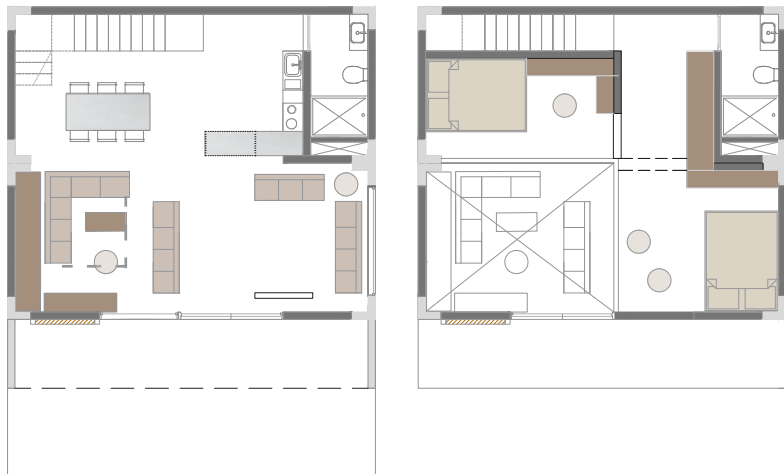
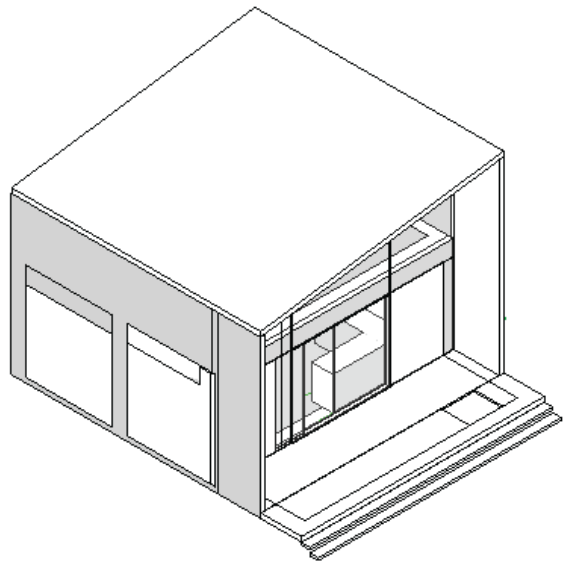
URTEC
Lightweight Concrete Prefab Houses



Upstairs Bedroom Area/Mezzanine

Double 8x3.4 module with slanted roof

URTEC
Lightweight Concrete Prefab Houses



Double 8x3.4 module with slanted roof







Moods









Kitchen Option 1



Kitchen Option 2





